

# Pawtuxet River Flooding Commission

## Providence Water Presentation

December 17, 2025

**Gregg Giasson, PE – Executive Engineer**

**Kathy Mello, PE – Deputy General Manager**

**Peter LePage – Senior Director of Engineering**

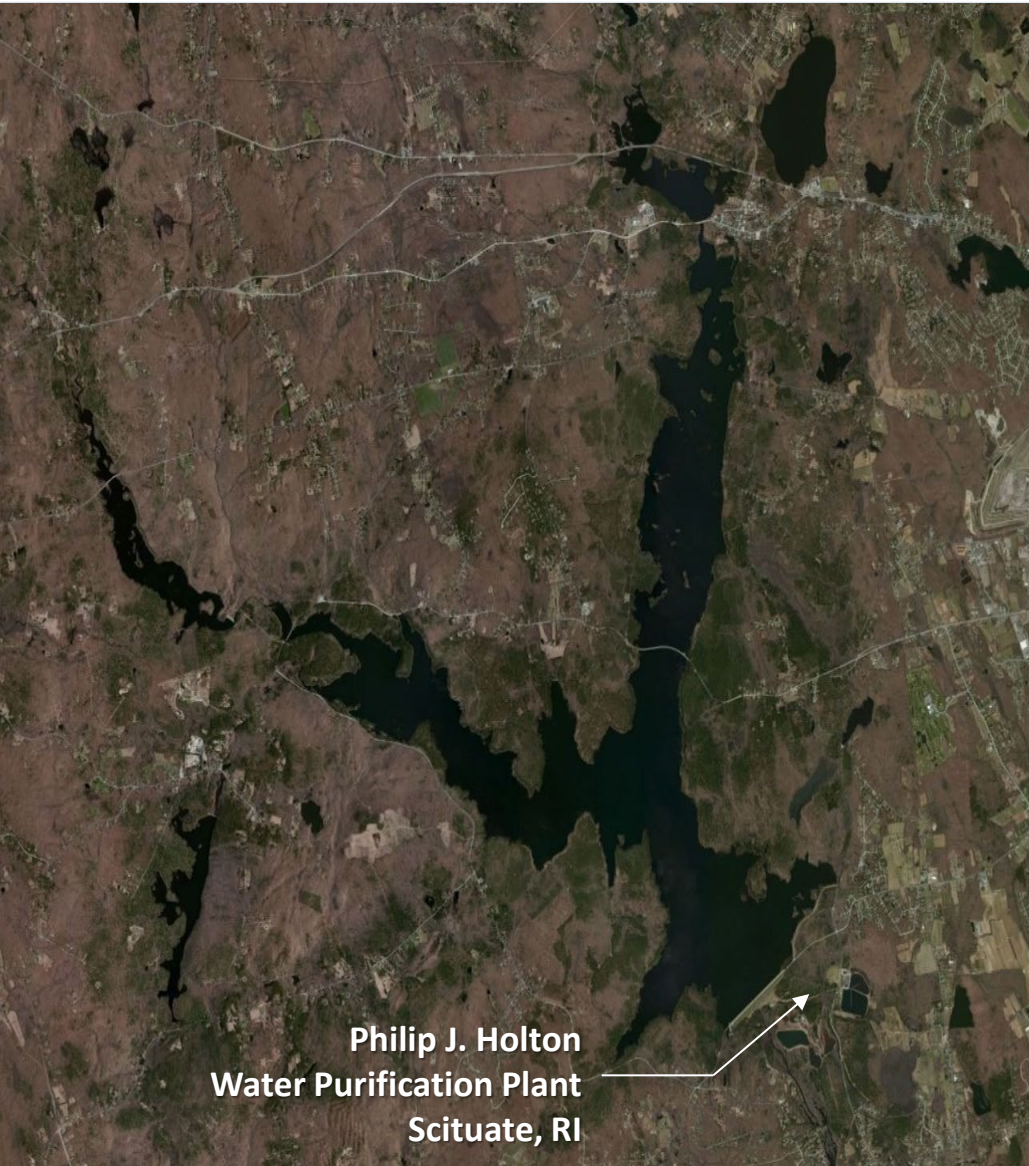


# Mission Statement

**It is the mission of Providence Water to provide reliable, high-quality, safe, clean drinking water for our customers at a reasonable cost, supported by excellent customer service, within the context of a positive, fair , efficient, effective and healthy workplace environment**



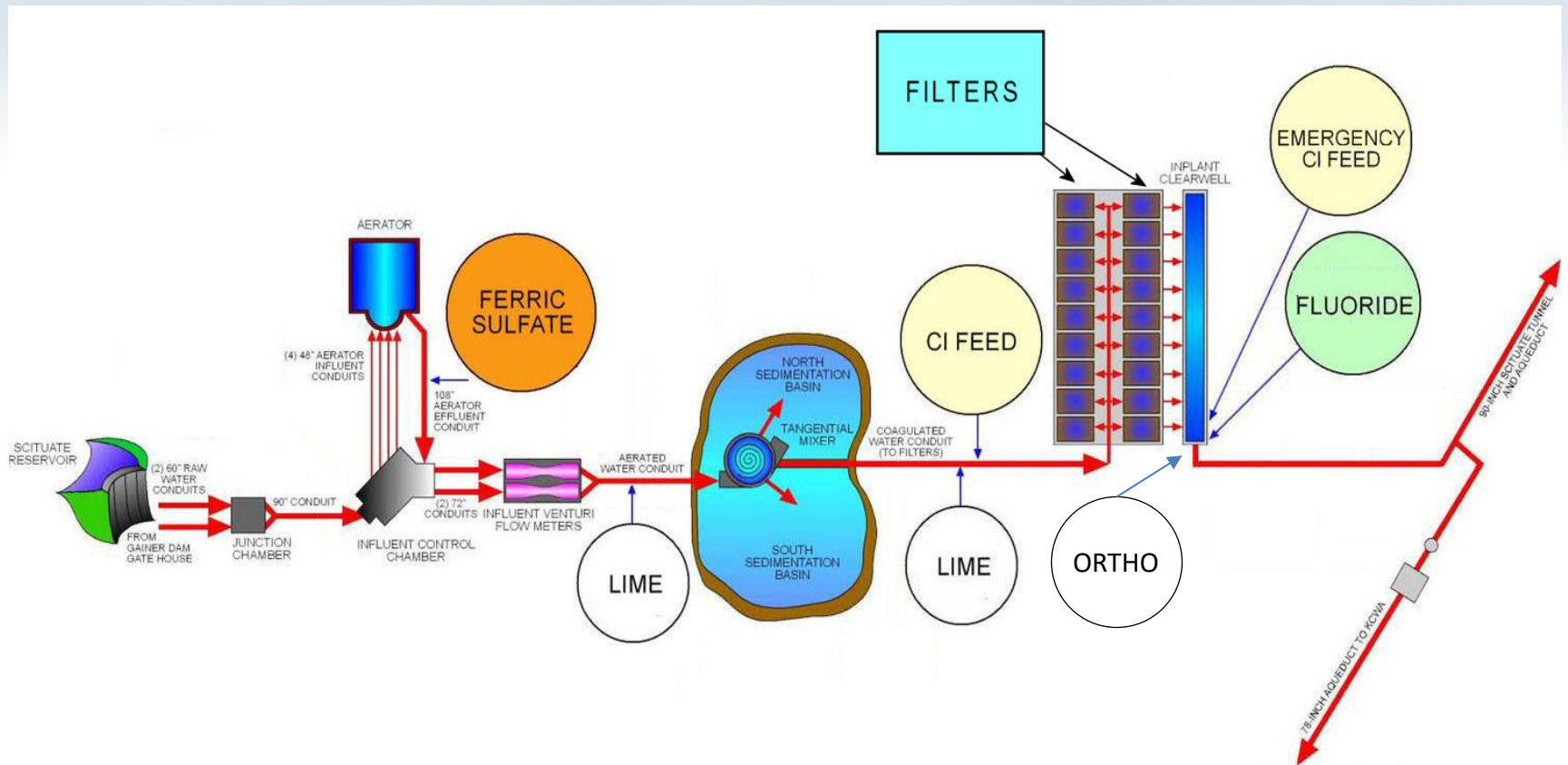
# Providence Water – Source of Supply



Philip J. Holton  
Water Purification Plant  
Scituate, RI

<b>Supply Source:</b>	Scituate Reservoir & Five Tributary
<b>Watershed Area:</b>	92.8 Square Miles
<b>Watershed Area Owned:</b>	26.8 Square Miles
<b>Storage Capacity:</b>	39.7 Billion Gallons
<b>Average Amount of Water Treated Per Day:</b>	60 Million Gallons

# Providence Water – WTP Schematic



144 MGD Conventional Treatment Plant

# Providence Water – Distribution System Overview

## TRANSMISSION & DISTRIBUTION

**Size of Pipes:** 6 inches to 102 inches in diameter

**Pipe Materials:** Cast Iron, Ductile Iron, Steel, Asbestos Cement and Concrete

**Total Length of Pipe:** 1,071 Miles

**Storage Tanks & Total Volume:** 7, 120 MG

**Pumping Stations:** 12

**Pressure Zones:** 10

**Service Connections:** ~78,000

**Valves:** 15,387

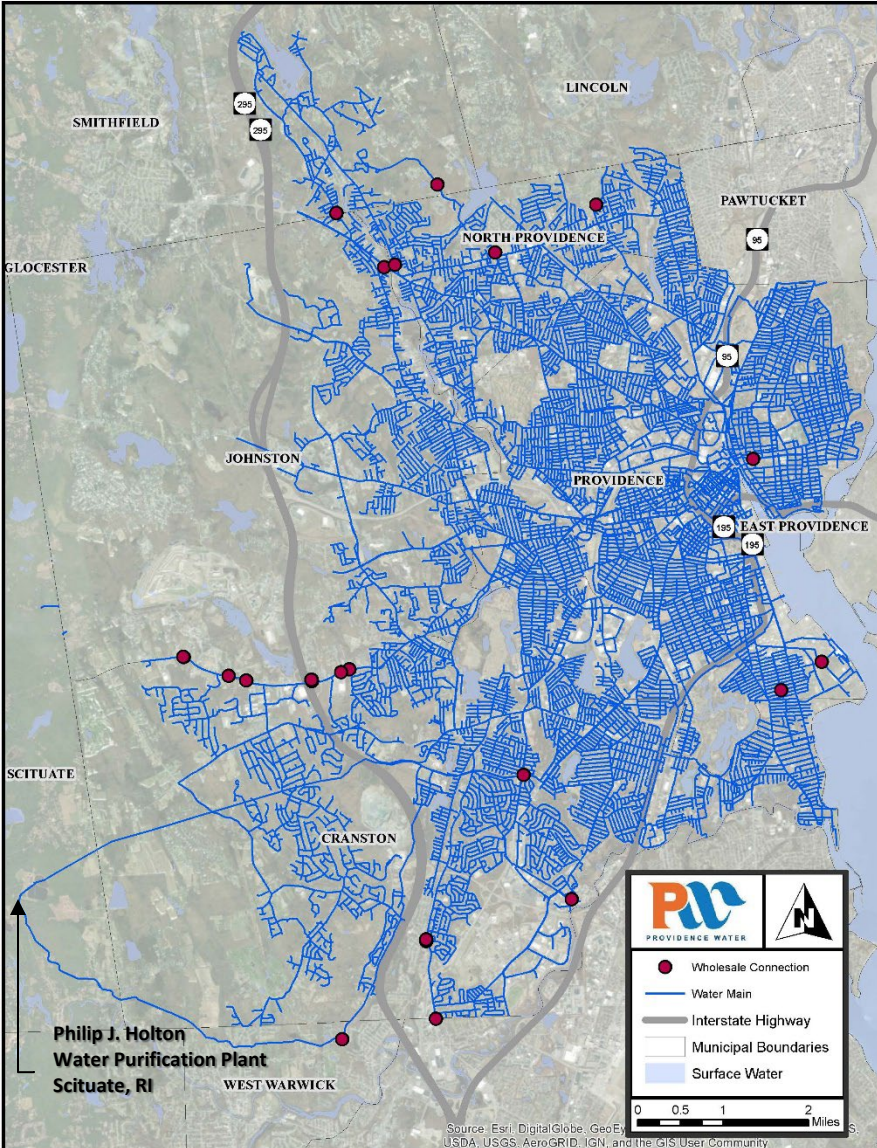
**Fire Hydrants:** 6,741

### WHOLESALE CUSTOMERS

Kent County Water Authority  
 Bristol County Water Authority  
 Greenville Water District  
 Smithfield Water District  
 East Providence Water Dept.  
 Warwick Water Department  
 Lincoln Water Commission

### RETAIL CUSTOMERS

Cranston  
 Providence  
 North Providence  
 Johnston  
 Smithfield



Source: Esri, DigitalGlobe, GeoEye, USAID, USGS, AeroGRID, IGN, and the GIS User Community

# Flows to Pawtuxet River

- **Spillway**
- **Gainer Dam Gatehouse**
- **Discharge from Lagoons**

# External Coordination

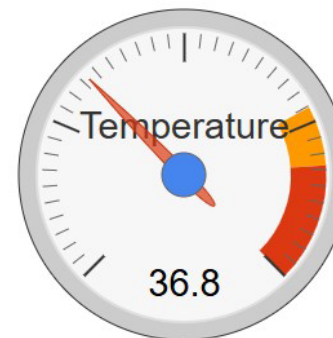
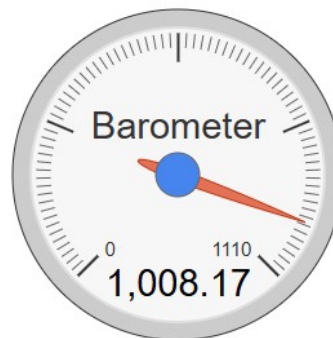
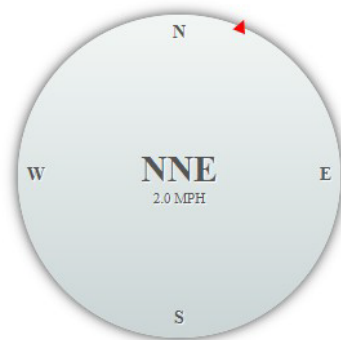
## REAL-TIME RESERVOIR AND WEATHER DATA

Scituate Reservoir Elevation (feet)	279.9	(89.1 % of Capacity)
Plant Influent (mgd)	54.45555	(84.26 CFS)
Cumulative Reservoir Evap. (gal)	862.392	
Downstream Discharge (mgd)	11.3	(17.48 CFS)

### Weather Data (41° 45' 12" North, 71° 33' 53" West; Elevation:252 feet)

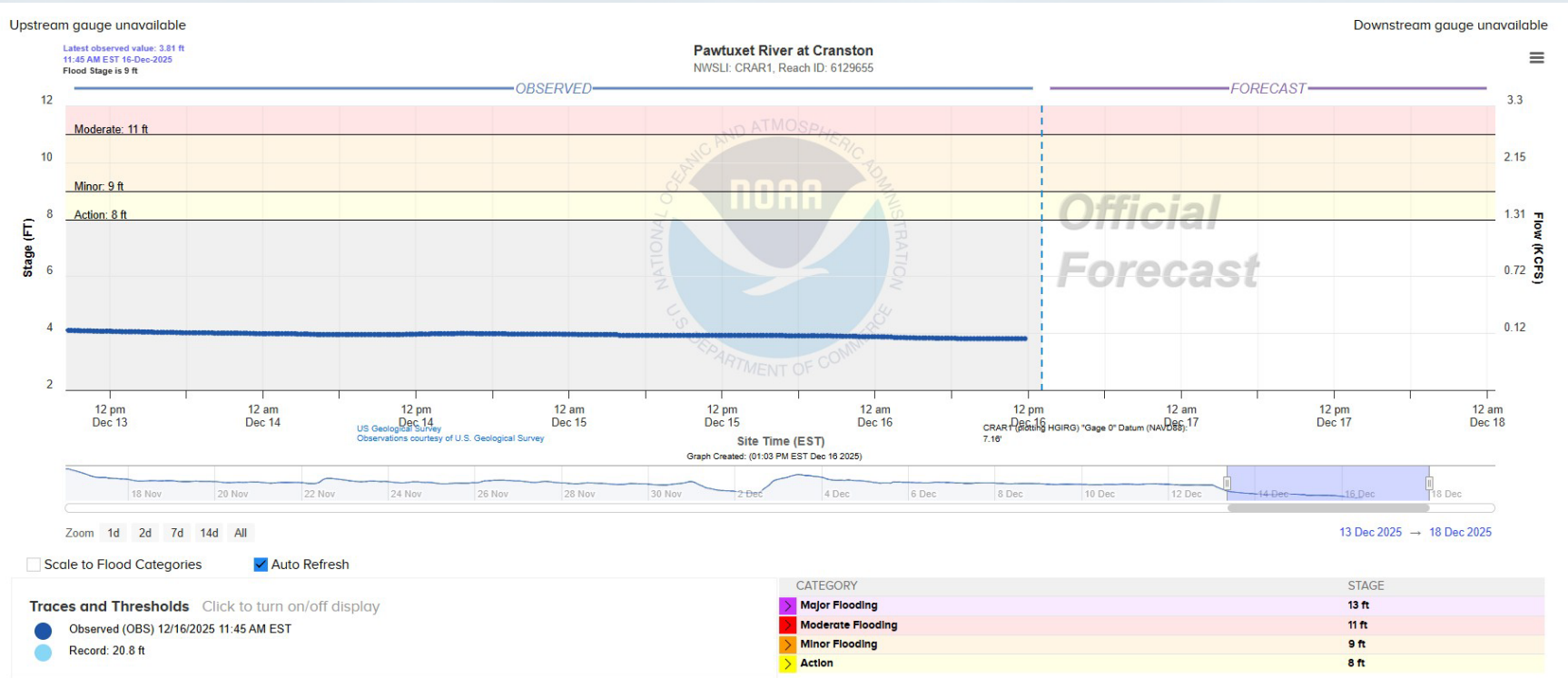
Temperature (°F)	36.8	
Apparent Temperature (°F)	36.8	
Barometer (mb)	1008.17	(29.77 in Hg)
Sea Level Barometer (mb)	1017.37	(30.04 in Hg)
Dew Point (°F)	32.0	
Wind Speed (mph)	2.0	
Wind Direction	NNE	
Cumulative Melted Precip. (in)	0	
Insolation (W/m <sup>2</sup> )	275.27	
Cumulative Evaporation (in)	0.009987950	

as of Tuesday 2025-Dec-16 12:59:08pm



Real time data publicly available ([www2.provwater.com](http://www2.provwater.com))

# External Coordination



Reliability of the Forecast: Based on current and forecast river, weather and reservoir conditions

**NOTE:** Forecasts are issued as needed during times of high water, but are not routinely available.



Pawtuxet River Cranston Gauge Data (<https://water.noaa.gov/gauges/crar1>)